



LAYTON JC118

The Layton sofa is a transitional design that features a banded base, a wide channel inside back, a curved seat, and hidden legs to highlight its elevated profile.

STANDARD FEATURES

Spring Construction: Sinuous
 Seat Cushion: Cloud 9
 Back Cushion: Tight Back
 Throw Pillows: See Schematics

OVERALL DIMENSIONS

BODY DETAILS

Overall Width: 87"
 Overall Depth: 45"
 Overall Height: 33"

SEAT DETAILS

Seat Height: 19"
 Seat Depth: 23"

LEG DETAILS

Leg Height: 2.5" Hidden

NAILHEAD FINISH*

- ☐ French Natural
- ☐ Pewter
- ☐ Nickel
- ☐ Bright Gold
- ☐ Antique Brass
- ☐ Black Pearl
- ☐ Bronze

SELF WELTING*

- ☐ Body
- ☐ Seat/Back Cushion

NAILHEAD SPACING*

- ☐ Head-to-Head
- ☐ One On, One Off

NAILHEAD LOCATION*

- ☐ Arms
- ☐ Body/Base

CONTRAST WELTING*

- ☐ Body
- ☐ Seat/Back Cushion

SEAT CUSHION FILL

- ☐ Cloud 9 (Standard)
- ☐ Luxe Aire*
- ☐ Down Supreme*
- ☐ Spring Down*
- ☐ Trillium*

FABRIC PATTERN: _____

FABRIC COLOR: _____

CONTRAST WELT FABRIC PATTERN: _____

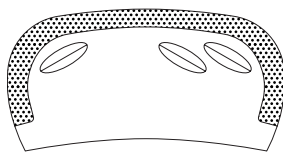
CONTRAST WELT FABRIC COLOR: _____

*Denotes Upcharge

AVAILABLE PIECES

(DRAWINGS NOT TO SCALE)

SOFAS



- ☐ #30 - SOFA
87"W x 45"D
Includes 2 - 22" x 22", 1 - 18" x 18"
throw pillows